

# MEITRACK T366 User Guide



## Change History

File Name	MEITRACK T366 User Guide	Created By	Kyle Lv
Project	T366	Creation Date	2016-11-16
		Update Date	2019-09-17
Hardware Version	H1.1 or later	Software Version	T366_V067 or later
Subproject	User Guide	Total Pages	23
File version	V1.5	Confidential	External Documentation

## Contents

1 Copyright and Disclaimer .....	- 5 -
2 Product Introduction .....	- 5 -
2.1 Product Features.....	- 5 -
2.1.1 Harsh Acceleration/Braking Alert.....	- 5 -
2.1.2 GPS Data Filtering .....	- 6 -
2.1.3 Activating Output by Event .....	- 6 -
2.1.4 Idling Detection.....	- 6 -
2.1.5 Changing I/O Port Mode .....	- 6 -
2.1.6 Auto Arming.....	- 7 -
2.1.7 Starting the Engine by RFID/iButton .....	- 8 -
3 Product Functions and Specifications .....	- 8 -
3.1 Product Functions.....	- 8 -
3.1.1 Position Tracking.....	- 8 -
3.1.2 Anti-Theft.....	- 8 -
3.1.3 Other Functions .....	- 8 -
3.1.4 Functions of Optional Accessories .....	- 9 -
3.2 Specifications .....	- 9 -
3.3 Product Versions.....	- 10 -
4 T366 and Accessories .....	- 10 -
5 Appearance.....	- 11 -
6 First Use .....	- 12 -
6.1 Installing the SIM Card.....	- 12 -
6.2 LED Indicator.....	- 12 -
6.3 Device Configuration .....	- 12 -
6.3.1 Installing the USB Driver .....	- 12 -
6.3.2 Configuring Device Parameters by Meitrack Manager.....	- 13 -
6.4 Tracking by Mobile Phone.....	- 14 -
6.5 Common SMS Commands .....	- 15 -
6.5.1 Real-Time Location Query – A00.....	- 15 -
6.5.2 Setting Authorized Phone Numbers – A71 .....	- 15 -
6.5.3 Setting the Smart Sleep Mode – A73 .....	- 16 -
6.5.4 Setting the Idling Alert – B14 .....	- 16 -
6.5.5 Setting Auto Arming – B27.....	- 17 -
6.5.6 Controlling Output Status – C01 .....	- 17 -
6.5.7 Setting I/O Port Status – C08 .....	- 17 -
7 Logging In to MS03 Tracking System.....	- 18 -
8 Installing the T366 .....	- 19 -
8.1 Installing an I/O Cable.....	- 19 -
8.1.1 Interface Definition .....	- 19 -
8.1.2 Wiring Diagram .....	- 20 -
8.1.3 Setting Code Matching of the RF Remote Control .....	- 22 -
8.1.4 Connecting the Microphone and Speaker .....	- 23 -

---

8.2 Mounting the T366 ..... - 23 -

## 1 Copyright and Disclaimer

Copyright © 2019 MEITRACK. All rights reserved.

 and  are trademarks that belong to Meitrack Group.

The user manual may be changed without notice.

Without prior written consent of Meitrack Group, this user manual, or any part thereof, may not be reproduced for any purpose whatsoever, or transmitted in any form, either electronically or mechanically, including photocopying and recording.

Meitrack Group shall not be liable for direct, indirect, special, incidental, or consequential damages (including but not limited to economic losses, personal injuries, and loss of assets and property) caused by the use, inability, or illegality to use the product or documentation.

## 2 Product Introduction

The T366 is a vehicle GPS tracker with IP67 water-resistance rating and can be installed into cars, motorcycles, yachts, and boats. This unit is equipped with a 1-Wire interface, which can be connected to the iButton reader, temperature sensor, fuel level sensor, etc. In addition, you may choose the T366 standard version, T366 RS232 version or T366 two-way calling version depending on your preference for more peripheral expansion.

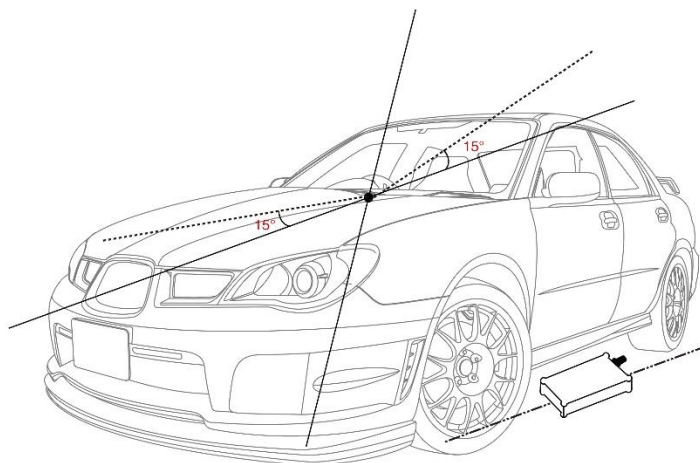
### 2.1 Product Features

#### 2.1.1 Harsh Acceleration/Braking Alert

You can detect the harsh acceleration/braking alert by setting the limit value.

Cautions on device installation:

1. The device should be installed into the vehicle according to the following direction.
2. The device installation angle cannot exceed 15 degrees.



The default harsh acceleration and braking alert values are 230 mG and -300 mG respectively.

Accelerate and decelerate alarm

Accelerate alarm value  mG

Decelerate alarm value  mG

Note: The alert results vary according to the device installation, vehicle model, vehicle weight, and driving behaviors. After the device has been installed properly, you can use the Meitrack Manager software to adjust the harsh acceleration and braking alert values by every 10 mG. You can also use the D79 command to set the values.

### 2.1.2 GPS Data Filtering

The GPS data filtering function can ensure GPS data accuracy and eliminate static drift.

You can set the following parameters by Meitrack Manager: **GPS speed range**, **GPS positioning accuracy**, and **Number of GPS satellites**. When the GPS data filtering function is enabled, if all conditions are met, GPS data will be updated.

GPS data filtering

Enable GPS data filtering (If all conditions below are met, GPS data will be updated.)

GPS speed range  To  km/h

GPS positioning accuracy <  \*10

Number of GPS satellites >

Note: This function can be enabled by Meitrack Manager.

### 2.1.3 Activating Output by Event

You can activate output by event.

For example:

1. When speeding is detected, the buzzer will make sounds.
2. When unauthorized ignition or GPS antenna cut-off is detected, the engine will not be able to start.
3. When iButton triggering is detected, the device can control engine startup.
4. When input or output status is detected, the output will be active or inactive.

### 2.1.4 Idling Detection

This function is used to detect whether a vehicle's engine is switched off while parking. To enable the function, you must connect input 2 to ACC detection.

When the device detects that the driving speed is 0 and the ACC is on for one consecutive minute (default time), an idling alert will be generated.

For details, see section 6.5.4 "Setting the Idling Alert – B14."

### 2.1.5 Changing I/O Port Mode

This function is used to change the I/O port mode. For example, change active negative input to analog port or positive input.

For details, see section 6.5.7 "Setting I/O Port Status – C08."

### 2.1.6 Auto Arming

You can enable the auto arming function by B27 command, Meitrack Manager software or MS03 tracking platform. This function is disabled by default.

When the device is in sleep mode and the function has been enabled, the device will enter auto arming state.

You can set disarming by B21 command or remote control.

Function	Call	GPRS	SMS	Output 1	Buzzer	Description
Open vehicle doors in arming state	√	√	√		√	When a vehicle door is opened without permission, the device will dial the authorized phone numbers in sequence and send a vehicle theft alert by SMS or GPRS. The buzzer will not stop buzzing until the arming state is disabled.
Start the engine in arming state	√	√	√	√	√	When the engine is started in arming state, the vehicle fuel will be cut off, and the device will dial the authorized phone numbers in sequence and send a vehicle theft alert by SMS or GPRS. The buzzer will not stop buzzing until the arming state is disabled.
Set arming while moving (Intercept moving vehicles)		√	√	√		When the stolen vehicle is moving, you can set arming by B21 GPRS or SMS command to intercept the vehicle. When the vehicle speed is lower than 5 km/h and the arming has been set, the vehicle fuel will be cut off, and the device will send an alert to the authorized phone numbers. Note: You cannot use the remote control to set arming when the vehicle is moving.
Tow vehicles in arming state	√	√	√			When the ACC is off and the vehicle vibrates continuously, a towing alert will be generated. The device will dial the authorized phone numbers in sequence and send a vehicle theft alert by SMS or GPRS. The buzzer will make sounds for five consecutive minutes. During this period, you can disable the arming state and then the buzzer will stop buzzing.

Note:

1. To implement the fuel/power cut-off function for a vehicle theft alert, you should select the vehicle theft event in the Output 1 column on the Meitrack Manager software.
2. To implement the alert function of the buzzer, you should set the 1-Wire interface (green cable) to alert output.

### 2.1.7 Starting the Engine by RFID/iButton

After swiping the authorized RFID card or the authorized iButton key touches the iButton reader, the driver must start the engine within 1 minute. Otherwise, the tracker's output 1 will be triggered (engine cut-off), and thus the driver cannot start the vehicle. At the moment, if you want to start the engine, swipe the iButton key/RFID card again.

Before starting the engine, ensure that:

1. The tracker's input 2 is connected to the engine detection cable.
2. An iButton key or RFID card has been authorized.
3. The tracker's output 1 is connected to the engine control cable through a relay.
4. The RFID ignition function has been enabled by Meitrack Manager or MS03 tracking platform.
5. The RFID event has been enabled.

## 3 Product Functions and Specifications

### 3.1 Product Functions

#### 3.1.1 Position Tracking

- GPS + LBS positioning
- Real-time location query
- Track by time interval
- Track by distance
- Track by mobile phone
- Speeding alert
- Cornering report

#### 3.1.2 Anti-Theft

- Polygonal geo-fence alert
- Engine or vehicle door status alert
- Remote vehicle fuel/power cut-off
- GPS blind spot alert
- Towing alert
- External power supply cut-off alert (for the device equipped with a battery)
- Vehicle theft alert

#### 3.1.3 Other Functions

- SMS/GPRS (TCP/UDP) communication (Meitrack protocol)
- Built-in 8 MB buffer for recording driving routes
- IP67 water-resistance rating
- Mileage report
- Roaming parameter settings
- Smart sleep mode
- Built-in 3-axis accelerometer



- Online Parameter Editor
- GPS data filtering
- Activate output by event
- Stop Moving and Start Moving alerts
- Vehicle power protection
- Idling alert
- AGPS

### 3.1.4 Functions of Optional Accessories

T366 standard version:

Optional Accessory	Function
iButton reader	Identify the driver ID and grant permission to start the vehicle.
A53 fuel level sensor	Check the fuel level and detect a fuel theft alert.
Digital temperature sensor	Check temperature. (At most 8 temperature sensors are supported, and the sensor must be used with the A61 sensor box.)
400 mAh/3.7 V high-temperature battery (0°C to 80°C)	The device can continuously work after the external power supply is cut off. When the battery power is low, a low power alert will be generated.
A64 remote control receiver + A67 remote control	Set arming or disarming remotely. Detect a vehicle theft alert.
Buzzer	Used to alert users.

T366 RS232 version (F2/F3/F5):

Optional Accessory	Function
Ultrasonic fuel level sensor	Check the fuel level and detect a fuel theft alert.
LED display	Display advertisements and notification.
RFID	Identify the driver ID and grant permission to start the vehicle. Manage drivers' attendance by report.

T366 two-way calling version (F4/F5):

Optional Accessory	Function
A57 speaker	Two-way calling
A58 microphone	Two-way calling

### 3.2 Specifications

Item	Specifications
Dimension	80.5 mm x 60 mm x 23.5 mm
Weight	100g
I/O power cable length	50 cm
Power supply	DC 9–90 V/1.5 A
Power consumption	Current in standby mode: 65 mA

Operating temperature	-35°C to 80°C (without battery)
Operating humidity	5% to 95%
LED indicator	Green indicator showing the GSM signal Blue indicator showing the GPS signal
Button/Switch	1 upgrade button (used to manually upgrade the firmware) 1 power button
Memory	8 MB buffer
Sensor	3-axis accelerometer (used to wake the device up by vibration and detect towing alerts, harsh acceleration alerts, and harsh braking alerts)
Frequency band	GSM: 850/900/1800/1900 MHz
GPS sensitivity	-165 dB
Positioning accuracy	2.5m
I/O port	2 digital inputs and 1 analog detection input (0–30 V; selectable positive, negative, and analog detection inputs) 1 output 1 USB port 1 1-wire interface (set to an output or a negative input) 1 output (voltage: 5V) 1 RS232 port (T366 RS232 version): GND/TX/RX
Microphone/Speaker	External (optional)

### 3.3 Product Versions

Product Model		GPS Antenna	RS232	Two-Way Calling	Hardware Version	Remarks
Main Model	Product Version					
T366	T366	Internal	Not support	Not support	H1.1	Basic version
	T366_F1	External	Not support	Not support	H1.1	External GPS antenna version
	T366_F2	Internal	Support	Not support	H1.1	RS232 version
	T366_F3	External	Support	Not support	H1.1	External GPS antenna & RS232 version
	T366_F4	Internal	Not support	Support	H1.2	Two-way calling version
	T366_F5	Internal	Support	Support	H1.2	Two-way calling & RS232 version

## 4 T366 and Accessories

#### T366 and standard accessories:

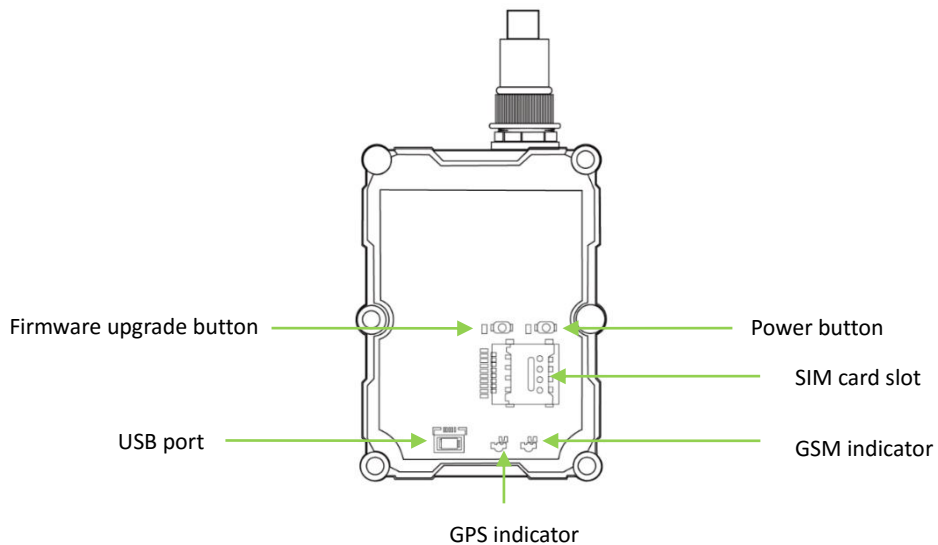
- T366 tracker (with a cable of 50 cm in length)
- 400 mAh battery (-20°C to 60°C)
- L wrench

- Hexagon screw
- CD download card

**Optional accessories:**

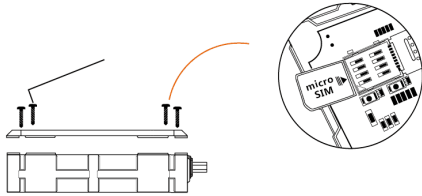
Optional Accessory	Description
Relay (12 V/24 V)	Connect to output 1.
Buzzer	Connect to the 1-Wire interface (green cable), which needs to be set to output 2. The buzzer should be connected to 5 V power supply.
A52 digital temperature sensor	Connect to the 1-Wire interface (green cable).
iButton reader	Connect to the 1-Wire interface (green cable).
A53 fuel level sensor	Connect to AD input 1 (blue cable).
A64 remote control receiver	Connect to input 1 (grey cable), which needs to be set to the remote control input.
A67 remote control	Use together with the remote control receiver.
USB cable	Standard Android cable
400 mAh high-temperature battery	High-temperature battery optional
External GPS antenna	3 meters in length Available for the device with an external antenna connector (two hardware versions available: internal or external antenna)
Ultrasonic fuel level sensor	Connect to the RS232 port (T366 RS232 version: F2/F3/F5)
LED display	Connect to the RS232 port (T366 RS232 version: F2/F3/F5)
RFID	Connect to the RS232 port (T366 RS232 version: F2/F3/F5)
A57 speaker	Connect to the green audio cable (Two-way calling version: F4/F5)
A58 microphone	Connect to the red audio cable (Two-way calling version: F4/F5)

## 5 Appearance



## 6 First Use

### 6.1 Installing the SIM Card



1. Use the screwdriver to open the back cover.
2. Insert the SIM card into the card slot (card chip facing down).
3. Close the cover, and tighten the screws.

Note:

- Power off the device before installing the SIM card.
- Ensure that the SIM card has sufficient balance.
- Ensure that the phone card PIN lock has been closed properly.
- Ensure that the SIM card in the device has subscribed the caller ID service if you want to use your authorized phone number to call the device.

### 6.2 LED Indicator

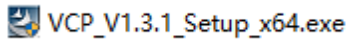
Press and hold down the power button for 3–5 seconds to start the device.

GPS Indicator (Blue)	
Blink (every 0.1 seconds)	The device is being initialized or the battery power is low.
Blink (0.1 seconds on and 2.9 seconds off)	A GPS signal is received.
Blink (1 second on and 2 seconds off)	No GPS signal is received.
GSM Indicator (Green)	
Steady on	A call is coming in or a call is being made.
Blink (every 0.1 seconds)	The device is being initialized.
Blink (0.1 seconds on and 2.9 seconds off)	A base station signal is received.
Blink (1 second on and 2 seconds off)	No base station signal is received.

### 6.3 Device Configuration

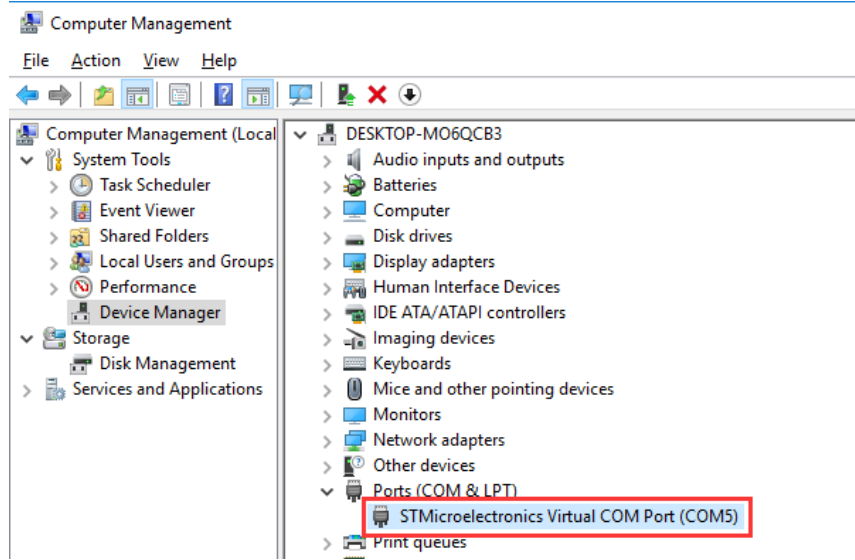
#### 6.3.1 Installing the USB Driver

1. Decompress the **stsw-stm32102.zip** file provided by Meitrack, locate the following file, and install the USB driver on a computer with 64-bit Windows system.

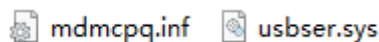


- After the installation is finished, connect the tracker to the computer by USB cable. If **STMicroelectronics Virtual COM Port (COM5)** is displayed on the **Computer Management** page, the driver is installed successfully.

Note: Please power on the tracker and then connect the tracker to the computer by USB cable. Otherwise, Meitrack Manager will be unavailable.



Note: After you finish the driver installation, if the preceding figure is not displayed, copy the **mdmcpq.inf** file to the **c:/windows/inf/** directory and **usbser.sys** file to the **C:/windows/system32/drivers/** directory. Then restart the computer.

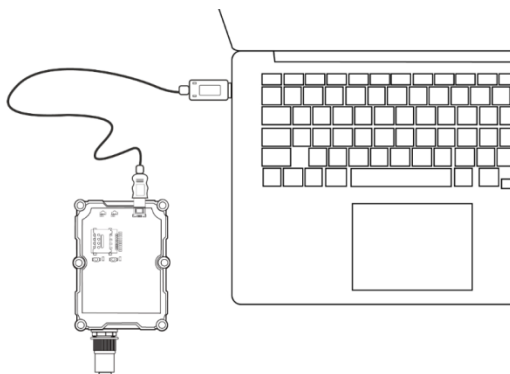


### 6.3.2 Configuring Device Parameters by Meitrack Manager

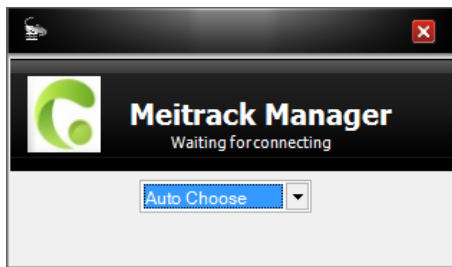
This section describes how to use Meitrack Manager to configure the device on a computer.

Procedure:

- Install the USB driver and Meitrack Manager.
- Connect the device to a computer by using the USB cable.



- Run Meitrack Manager, then the following dialog box will appear.



- Turn on the device, then Meitrack Manager will detect the device model automatically and the parameter page will appear accordingly.

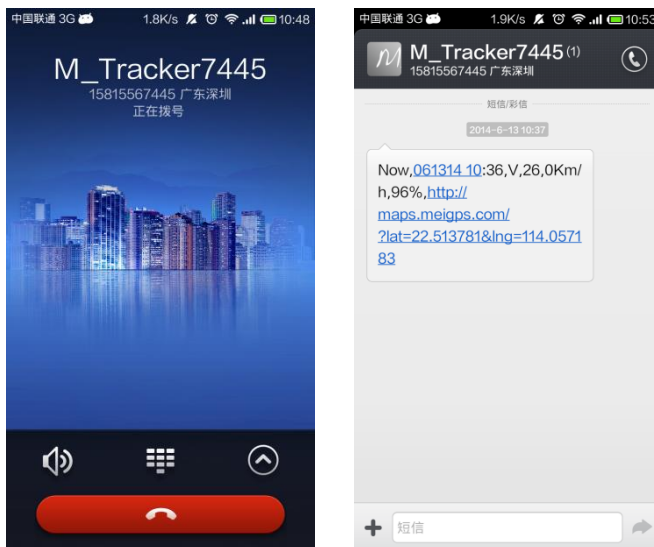
For details about MEITRACK Manager, see the *MEITRACK Manager User Guide*.

## 6.4 Tracking by Mobile Phone

Call or send the **0000,A00** command by SMS to the device's SIM card number. The device will reply to an SMS with a map link.

Click the SMS link. The device's location will be displayed on Google Maps on your mobile phone.

Note: Ensure that the device's SIM card number has subscribed the caller ID service. Otherwise, the tracking function by mobile phone will be unavailable.



SMS example:

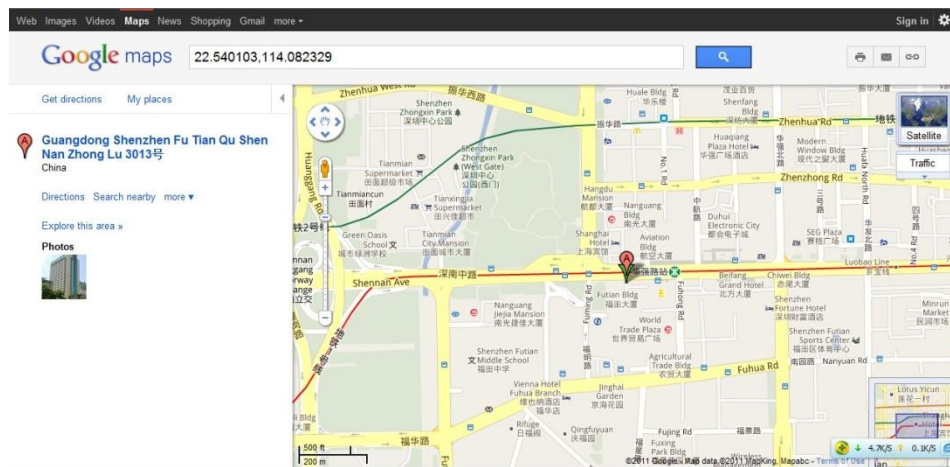
Now,061314 10:36,V,26,0Km/h,96%,http://maps.meigps.com/?lat=22.513781&lng=114.057183

The following table describes the SMS format:

Parameter	Description	Remarks
Now	Indicates the current location.	SMS header: indicates the current location or the alert type.
061314 10:36	Indicates the date and time in <b>MMDDYY hh:mm</b> format.	None
V	The GPS is invalid.	A = Valid

		V = Invalid
26	Indicates the GSM signal strength.	Value: 1–32 The larger the value is, the stronger the signal is. If the value is greater than 12, GPRS reaches the normal level.
0Km/h	Indicates the speed.	Unit: km/h
96%	Indicates the remaining battery power.	None
<a href="http://maps.meigps.com/?lat=22.513781&amp;lng=114.057183">http://maps.meigps.com/?lat=22.513781&amp;lng=114.057183</a>	Indicates the map link. Latitude: 22.513781 Longitude: 114.057183	None

If your mobile phone does not support HTTP, enter the latitude and longitude on Google Maps to query a location.



## 6.5 Common SMS Commands

### 6.5.1 Real-Time Location Query – A00

SMS sending: 0000,A00

SMS reply: Now,Date and time,Positioning status,GSM signal strength,Speed, Remaining battery power,Map link

Description: This command is used to query tracker's current location.

Example:

Sending: 0000,A00

Reply: Now,160721 16:40,V,12,56Km/h,97%,<http://maps.meigps.com/?lat=22.513015&lng=114.057235>

### 6.5.2 Setting Authorized Phone Numbers – A71

SMS sending: 0000,A71,Phone number 1,Phone number 2,Phone number 3

SMS reply: IMEI,A71,OK

Description:

Phone number: A phone number contains a maximum of 16 bytes. If no phone numbers are set, leave them blank.

Phone numbers are empty by default.

Phone number 1/2/3: Set these phone numbers to authorized phone numbers. When you call the tracker by using

these phone numbers, you will receive SMS notification about the location, geo-fence alert and low power alert and SMS notification or a call about the unauthorized door open and unauthorized ignition.

If you need to delete all authorized phone numbers, send **0000,A71**.

Example:

Sending: 0000,A71,13811111111,13822222222,13833333333

Reply: 353358017784062,A71,OK

### 6.5.3 Setting the Smart Sleep Mode – A73

SMS sending: 0000,A73,*Sleep level*

SMS reply: IMEI,A73,OK

Description:

When the sleep level is **0**, the sleep mode is disabled (default).

When the sleep level is **1**, the tracker enters the normal sleep mode. The 3G module always works, and the GPS module occasionally enters the sleep mode. The tracker works 25% longer in the normal sleep mode than that in the normal working mode. This mode is not recommended for short interval tracking; this will affect the route precision.

When the sleep level is **2**, the tracker enters the deep sleep mode. If no event (SOS, button triggered, incoming calls, SMSs, or vibration) is triggered after five minutes, the GPS module will stop working, and the 3G module will enter sleep mode. Once an event is triggered, the GPS and 3G modules will be woken up.

Note: In any condition, you can use an SMS command to disable the sleep mode, and then the tracker exits the sleep mode and returns back to the normal working mode.

Example:

Sending: 0000,A73,2

Reply: 353358017784062,A73,OK

### 6.5.4 Setting the Idling Alert – B14

SMS sending: 0000,B14, *Consecutive Time (second),Speed (km/h),Alert Time (second)*

SMS reply: IMEI,B14,OK

Description:

The function is used to detect idling. The tracker must be connected to ACC detection. Otherwise, the function will be unavailable.

Time: indicates the consecutive time for the speed and alert time. The parameter value ranges from 0 to 60000.

Unit: second.

Speed: The parameter value ranges from 0 to 200. Unit: km/h. (5 km/h is recommended.)

An idling alert will be generated when the following conditions are met simultaneously: the device detects that the ACC is on; the speed is lower than the preset value; and the consecutive time for the speed is larger than the preset value.

If you want to read the parameters, send B14.

Note: The alert activation conditions may be affected due to static drift. Therefore, you are advised to set the speed to a value between 5 km to 10 km and the consecutive time for the speed to a value that is larger than 60 seconds.

The Alarm time is temporarily closed, any parameter can be set first and it is advised to set to 0.

Example:

Sending: 0000,B14,60,5,0



Reply: 353358017784062,B14,OK

### 6.5.5 Setting Auto Arming – B27

SMS sending: 0000,B27,x

SMS reply: IMEI,B27,OK

Description:

x: Whether to enable auto arming. When the parameter value is **1**, auto arming will be enabled. When the parameter value is **0**, auto arming will be disabled.

When the device is in sleep mode and the auto arming function has been enabled, the device will enter auto arming state.

You can set disarming by B21 command or remote control.

Example:

Sending: 0000,B27,1

Reply: 353358017784062,B27,OK

### 6.5.6 Controlling Output Status – C01

SMS sending: 0000,C01,Speed,ABCDE

SMS reply: IMEI,C01,OK

Description:

When the speed is **0**, no speed limit exists. That is, when the tracker receives a command, the output control takes effect immediately.

When the speed is a value ranging from 1 to 255 (unit: km/h), set the speed limit for output control. When the driving speed is lower than the speed limit, the output control takes effect.

ABCDE: indicates the output 1, output 2, output 3, output 4, and output 5 respectively. When the parameter value is **0**, the output is disabled. When the parameter value is **1**, data will be generated according to preset output mode. When the parameter value is **2**, previous status will be remained.

Example:

Sending: 0000,C01,10,10000

Reply: 353358017784062,C01,OK

### 6.5.7 Setting I/O Port Status – C08

SMS sending: 0000,C08,IO0:Mn,IO1:Mn,IO2:Mn,IO3:Mn,IO4:Mn

SMS reply: IMEI,C08,IO0:Mn,IO1:Mn,IO2:Mn,IO3:Mn,IO4:Mn

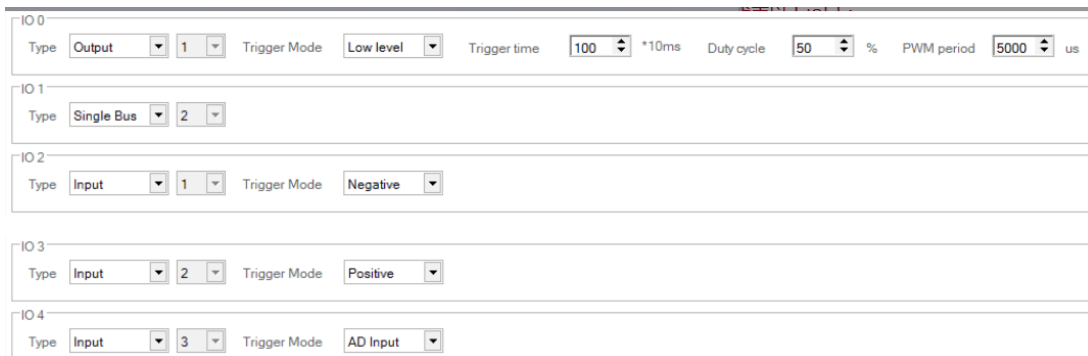
Description:

- IO0, IO1, IO2, IO3, and IO4 indicate I/O ports.
  - IO0: open collector 1 by default (yellow cable)
  - IO1: 1-Wire interface by default (green cable)
  - IO2: negative input 1 by default (grey cable)
  - IO3: positive input 2 by default (white cable)
  - IO4: AD input 1 by default (blue cable)
- Mn indicates the I/O port status. The parameter value is as follows:
  - 0: low trigger
  - 1: high trigger

- 2: AD input
  - 3: Remote control input
  - 4: open collector
  - 5: low output
  - 6: PWM output
  - 7: Buzzer alert output
  - 8: 1-Wire
3. You can set one or multiple input ports at the same time. The command **0000,C08** is used to read I/O port parameters.

Note:

1. IO0: **Mn** parameter value is 4, 5, or 6.
2. IO1: **Mn** parameter value is 0, 4, 5, 7, or 8.
3. IO2: **Mn** parameter value is 0, 1, or 2.
4. IO3: **Mn** parameter value is 0, 1, or 2.
5. IO4: **Mn** parameter value is 0, 1, 2, or 3.



The screenshot shows a configuration interface for five I/O ports (IO0 to IO4). Each port has a 'Type' dropdown menu and a 'Trigger Mode' dropdown menu. IO0 is configured as 'Output' with a value of 1, 'Low level' trigger mode, a trigger time of 100 \*10ms, a duty cycle of 50 %, and a PWM period of 5000 us. IO1 is configured as 'Single Bus' with a value of 2. IO2 is configured as 'Input' with a value of 1 and 'Negative' trigger mode. IO3 is configured as 'Input' with a value of 2 and 'Positive' trigger mode. IO4 is configured as 'Input' with a value of 3 and 'AD Input' trigger mode.

Example:

Sending: 0000,C08,IO0:5

Reply: 353358017784062,C08,IO0:5,IO1:0,IO2:2,IO3:2,IO4:1

**For details about SMS commands, see the *MEITRACK SMS Protocol*.**

Note:

1. The default SMS command password is **0000**. You can change the password by using Meitrack Manager and SMS command.
2. The device can be configured by SMS command with a correct password. After an authorized phone number is set, only the authorized phone number can receive the preset SMS event report.

## 7 Logging In to MS03 Tracking System

Visit <http://ms03.trackingmate.com>, enter the user name and password, and log in to the MS03. (Purchase the login account from your provider.)

For more information about how to add a tracker, see the *MEITRACK GPS Tracking System MS03 User Guide* (chapter 4 "Getting Started").

**The MS03 supports the following functions:**

- Track by time interval or distance.
- Query historical trips.

- Set polygonal geo-fences.
- Bind driver and vehicle information.
- View various reports.
- Send commands in batches.
- Support OTA updates.

For details, see the *MEITRACK GPS Tracking System MS03 User Guide*.

## 8 Installing the T366

### 8.1 Installing an I/O Cable

#### 8.1.1 Interface Definition

The standard I/O cable is an 8-pin cable, including the power, analog input, and negative/positive input and output interfaces.



1	2	3	4	5	6	7	8
Power (+)	GND (-)	Input 1 (-)	Input 2 (+)	AD input 1	Output 1	1-wire interface	5 V output cable

Pin Number	Color	Description
1 (Power +)	Red	Positive charge of the power input, connected to the positive charge of the vehicle battery. Input voltage: 11.4–90 V. 12 V or 24 V is recommended.
2 (GND)	Black	Ground wire, connected to the negative charge of the vehicle battery or to the negative terminal.
3 (Input 1)	Grey	Digital input (negative trigger by default) Connect to a door trigger signal cable to detect vehicle door status. (Most Chinese, Korean, and Japanese cars are negative edge-triggered.) The port can be set to positive trigger, AD input 2 (0–30 V), or remote control input.
4 (Input 2)	White	Digital input, positive trigger. The port can be set to negative trigger or AD input 3 (0–30 V).

		Connect to the vehicle ACC cable by default to detect the vehicle ACC status.
5 (AD input 1)	Blue	Analog input with 12-bit resolution and valid voltage 0–30 V. The port can be set to input 3 (positive/negative).
6 (Output 1)	Yellow	Valid: low level (0 V) Invalid: open collector Maximum voltage for output open collector (invalid): 60 V Maximum current for output low level (valid): 500 mA Set the PWM output (output time and adjustable pulse width). Connect to an external relay to remotely cut off the vehicle fuel cable or engine power supply. Note: Output 1 is regarded as a fuel/power cut-off output for a vehicle theft alert by default.
7 (1-wire interface)	Green	Connect to the iButton and other devices supporting 1-wire protocol. The port can be set to negative input 4 or output 2 open collector.
8 (5 V output cable)	Pink	5 V output It can be connected to the power supply of a temperature sensor. The buzzer should be connected to 5 V power supply. If it connects to more than 12 V power supply, the device may be damaged due to large current.

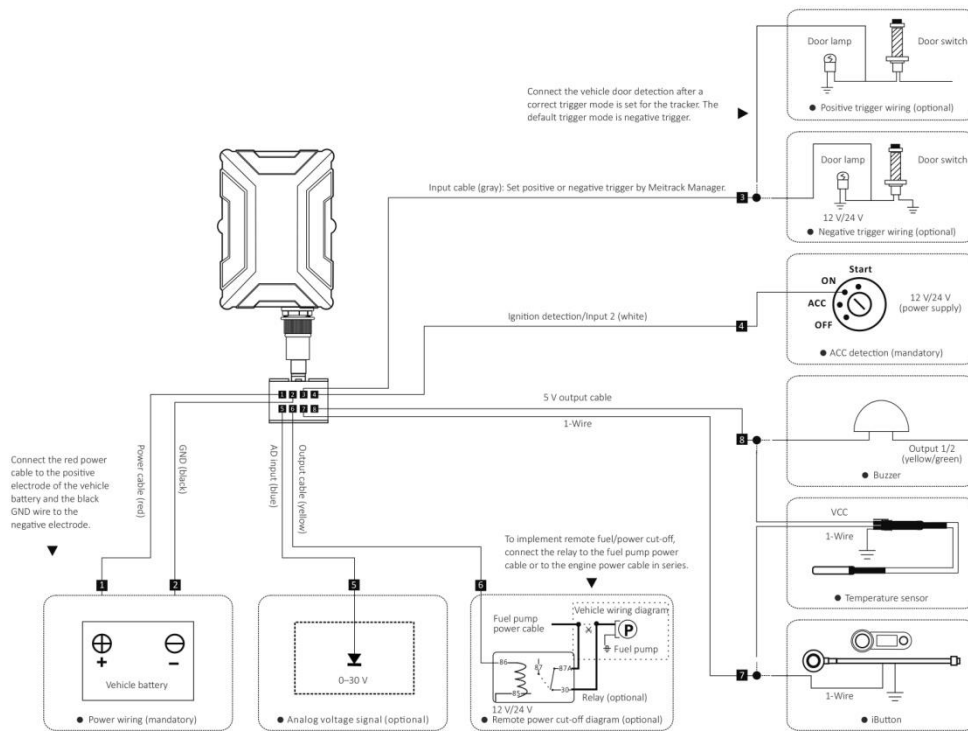
The I/O cable of T366 RS232 version is an 11-pin cable. Besides the above 8 pins, there are the following 3 pins.

9	10	11
GND	RS232-Tx	RS232-Rx

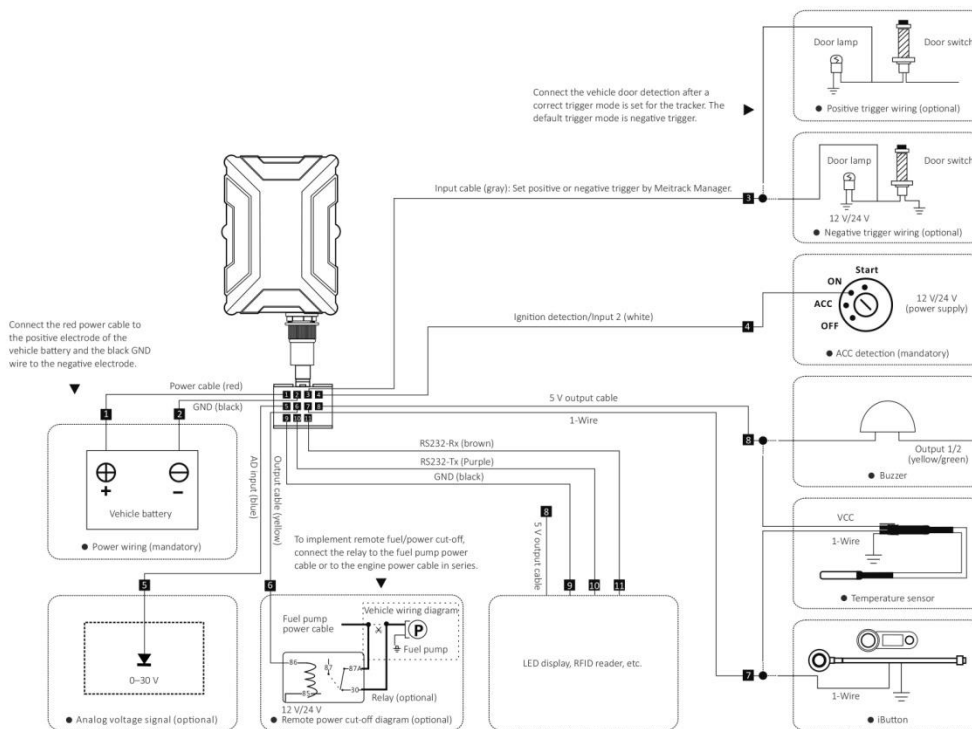
Pin Number	Color	Description
9 (GND)	Black	Ground wire
10(RS232-Tx)	Purple	The device sends data through RS232 port.
11(RS232-Rx)	Brown	The device receives data through RS232 port.

### 8.1.2 Wiring Diagram

T366 standard version:

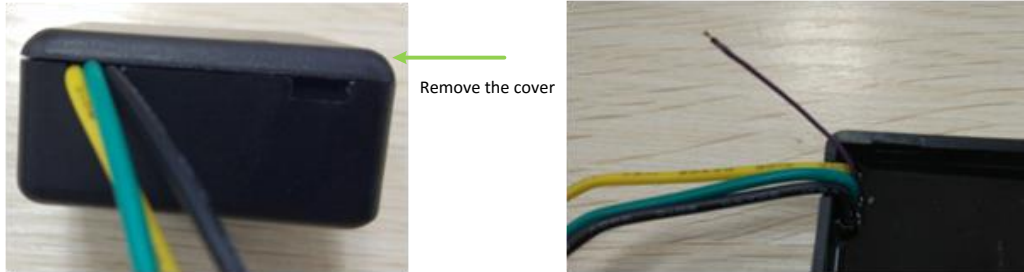


T366 RS232 version:



### 8.1.3 Setting Code Matching of the RF Remote Control

After the cover of the remote control receiver is removed, there will be a purple cable, as shown in the following figures.

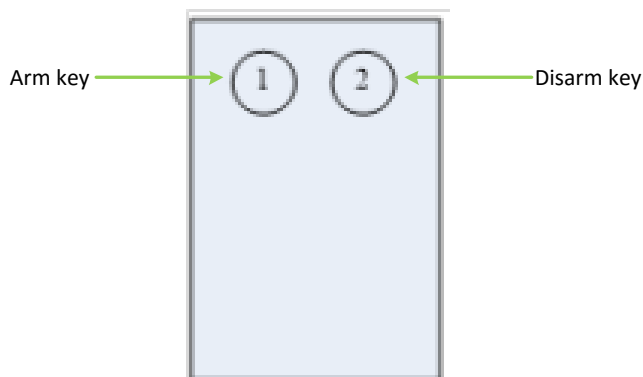


Cable Color	Description
Yellow	Connect to 5 V power supply.
Black	GND
Green	Remote control output cable Connect to input 1 (grey cable), which needs to be set to the remote control input.
Purple	Cable for code matching

Perform the following steps to set code matching:

1. Connect the remote control receiver's yellow cable to 5 V power supply and code matching cable (purple) to GND for more than 2 seconds.
2. Press any key of the remote control, and then press any key of the other remote control.
3. Release the code matching cable of the remote control receiver.
4. Enable the SMS/GPRS events of arming and disarming, and use the remote control to set arming or disarming. If an SMS or GPRS event is received, the code matching is set successfully.

Definitions of RF Remote Control Keys:



Function Key	Vehicle State	Operation	Description
1: Arm key	Disarming state	Press once	The buzzer will make a sound, indicating that the device is in arming state. In this way, if input 1 (vehicle door), input 2 (ACC) or a towing event is triggered, a vehicle theft alert (event 58) will be generated by SMS or GPRS and the device will dial the authorized phone numbers in sequence.

	Arming state	Press once	The buzzer will make a sound, indicating that the device is in arming state.
2: Disarm key	Arming state	Press once	The buzzer will make two sounds, indicating that the device is in disarming state.
	Disarming state	Press once	The buzzer will make two sounds, indicating that the device is in disarming state.

Note: The buzzer connects to the 1-Wire interface (green cable), which needs to be set to output 2.

#### 8.1.4 Connecting the Microphone and Speaker

Connect the speaker to the green audio cable, and connect the microphone to the red audio cable, as shown as the following figure.



## 8.2 Mounting the T366

Mount the device in the vehicle by cable tie.

Note: Do not install it at a metal covered place.

**If you have any questions, do not hesitate to email us at [info@meitrack.com](mailto:info@meitrack.com).**