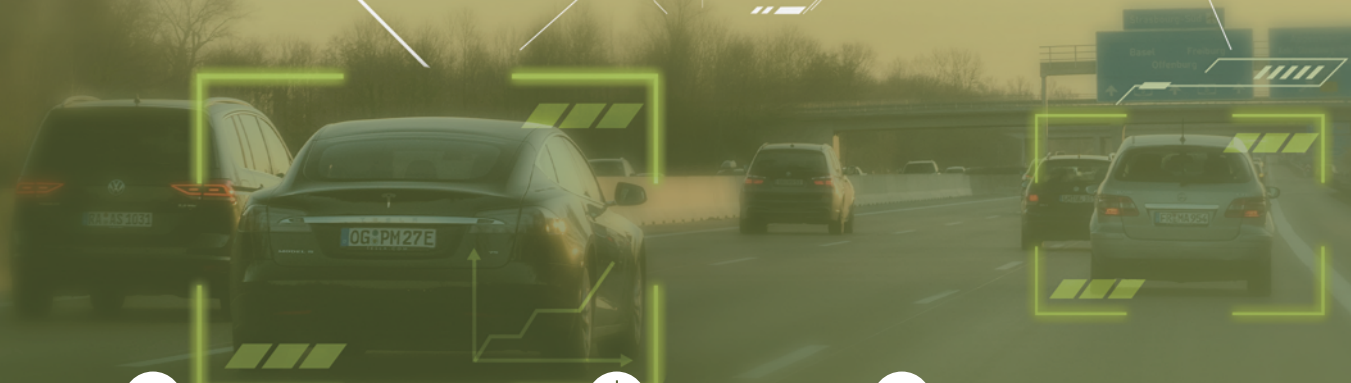
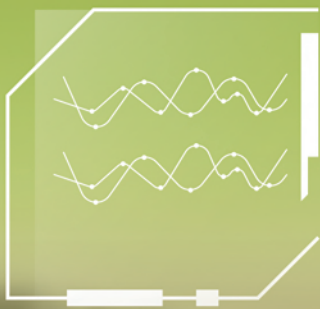


AI Dashcam

MD101



1080P Video Recording



SOS Alarm



Seatbelt Monitoring

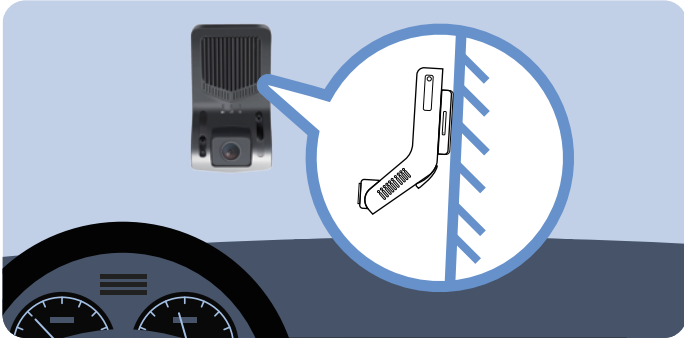


Adaptive ADAS/DMS Algorithms

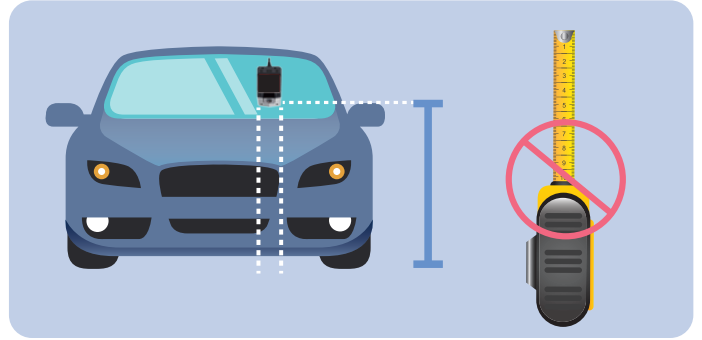


Extendable RS232 and AV Interfaces Reserved

Main Features



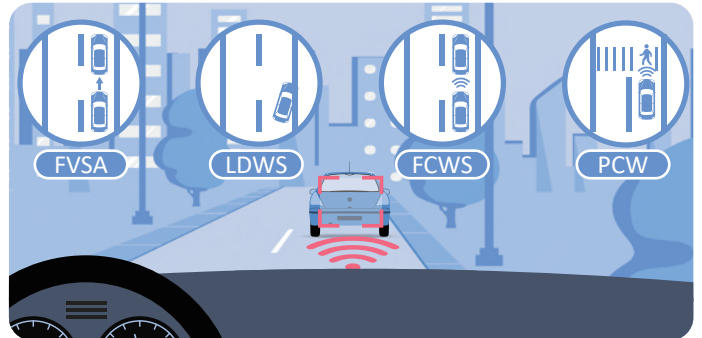
Easy Installation



Adaptive ADAS/DMS Algorithms



Driver Monitoring System



Advanced Driver-Assistance System

Accessories



MD101 MDVR



2m power cord



SOS alarm button



GPS antenna



SIM card ejector pin



CD download card

Specifications



Power supply	Rated voltage	DC: 12-24V
	Power consumption	500mA
AI	AI Video	ADAS, DMS
Storage medium	TF card	Up to 256 GB, class 10 and above, FAT32 format
System structure	Operation system	Linux
Audio and video	Video input	Built-in ADAS front camera and DMS rear camera
	Video output	Resolution: ADAS 720P; DMS 1080P
	Video search and playback	Retrievable playback by channel, video type and time
	Video compression	H.264
	Audio input	Built-in MIC, mono
	Audio output	Built-in speaker, mono
	Audio compression	PCM, WAV
	Recording method	Normal recording and AI alarm recording; Audio and video recorded simultaneously
	WiFi/GNSS	WiFi
Positioning mode		GPS & BD
Positional accuracy		5 m
Sensitivity		-162 dBm
GNSS antenna		External GPS antenna
Protocol	Protocol supported	JT/T 1078-2016, JT/T808-2019
Other	Operating temperature	-20°C to 70°C (without battery)
	I/O port	4 x Din (ACC/SOS/left-turn signal/right-turn signal);
	RS232 (optional)	Only the Thai DLT certification
	Sensor	Built-in 3-axis accelerometer
	Outer case	Dimensions: 116 mm x 66 mm x 38 mm
	Weight	198g
Frequency band	MD101-E	WCDMA: B1/B5/B8 LTE-FDD: B1/B3/B7/B8/B20/B28 LTE-TDD: B38/B40/B41
	MD101-A	WCDMA: B2/B4/B5 LTE-FDD: B2/B4/B12
	MD101-AU	GSM: B2/B3/B5/B8 WCDMA: B1/B2/B5/B8 LTE-FDD: B1/B2/B3/B4/B5/B7/B8/B28 LTE-TDD: B40
	MD101-J	WCDMA: B1/B6/B8/B19 LTE-FDD: B1/B3/B8/B18/B19/B26 LTE-TDD: B41

